

SIPARILA

Board and Batten genuine wood siding

Siparila Board and Batten siding is a high quality exterior siding that is primed on all four sides. Primed siding must be painted with two coats of paint after installation to ensure full coverage. Remember that all bare-wood and nail-heads must be carefully painted to retain the integrity of the finish.

Nordic Whitewood – authentic and genuine wood from beautiful Nordic nature

Finland is one of the world's best forest growing regions because of its cold winter climate and short growing season. These attributes promote a slow forest growth rate that makes Finland's wood a top grade building material—tough, dense, and straight-grained.

Technical information

Product	Nominal dimensions	Treatment	Actual dimensions	Length	Face coverage, inch	Installation
Board	1 1/4" x 9"	Primed	3/4" x 7 3/4"	12 4/5 ft	8.27	vertically
Batten	1" x 2"	Primed	11/16" x 1 5/8"	12 4/5 ft	8.27	vertically

Installation Instruction - Board and Batten Siding

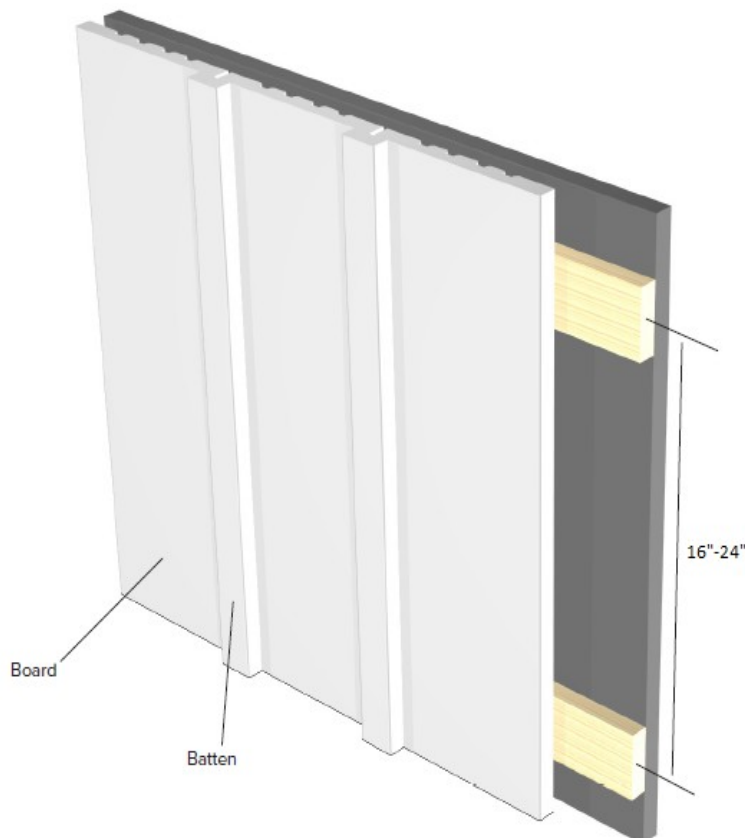
Horizontal Furring Strips

Furring strips must be secured directly to the frame of the building:

- When using 1x4" furring strips the maximum distance between furring strips is 24" (610 mm) on centre.
- When using 1x3" furring strips the maximum distance between furring strips is 16" (406 mm) on centre.

Diagonal Furring Strips

Furring strips must be secured directly to the frame of the building. Install furring strips diagonally at a distance of 12" or 18" (300 or 457 mm) on centre at a 45 degree angle. It is advisable to use 1x4" furring strips for 18" on centres and 1x3" furring strips 12" on centres. *Furring strips must be kiln dried and of good, sound quality.*



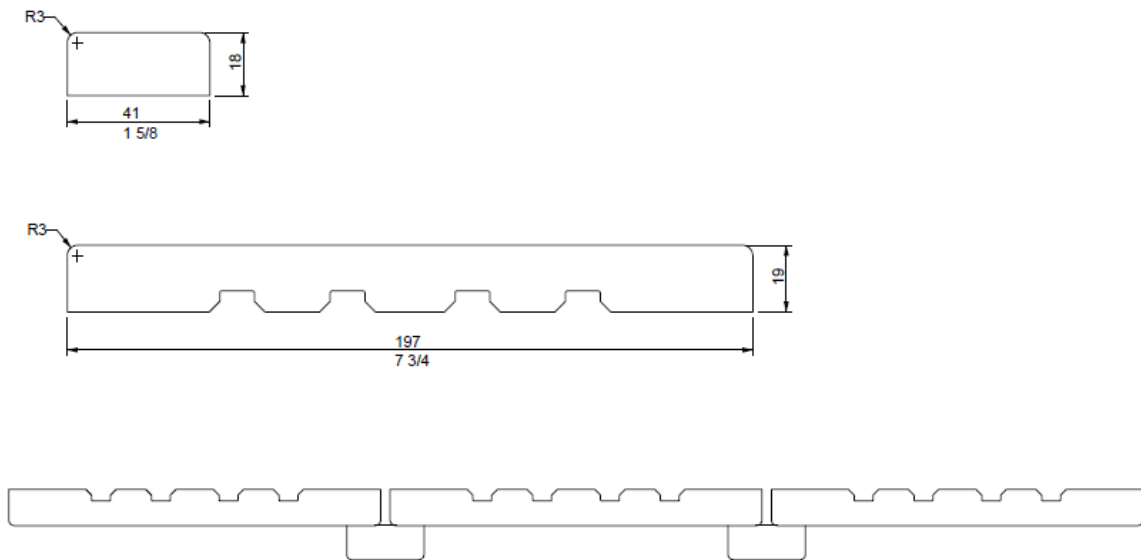
Starting the installation

The siding must be installed over furring strips to ensure airflow and allow for moisture drainage, reducing the risk of premature aging. A 3/4" (19 mm) open and unobstructed ventilation duct must be left between the siding and the building; please refer to local building codes to verify ventilation duct guidelines and other building requirements. Between batten should be left 13 mm space.

The siding should not contact the ground or other horizontal surfaces and should not be closer than 8" (203 mm) to the ground. Please keep in mind that the siding must never touch the ground.

Installation with Nails

Use 2" hot-dipped zinc galvanized or stainless steel flat textured head, ring shank nails that are corrosion resistant. Each board and batten should be installed with one or two nails on each furring strip. The fastening distance from the panel edge must be at least 1 1/2 (38 mm) in order to prevent cracking when fastening siding, always press the board firmly against the furring strip.



Profile picture of Board and batten

www.siparila.com
Siparila Oy
Varaslahdentie 1
40800 Vaajakoski
Finland