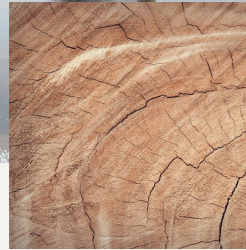




SIPARILA ARCTIC  
Installation instruction



ARCTIC product range consists of fully finished cladding, which does not require any on-site surface treatment after installation. Hidden fixing of the panels creates a nail-free cladding that prevents moisture and other contaminants from seeping in through nail holes. Hidden fixing makes installation also convenient and cost-effective. Handle fully finished cladding with care not to damage the painted surface.

Please Note! As Siparila ARCTIC exterior products ship fully finished, one must exercise caution to avoid damaging the painted surfaces during installation. All damages to the painted surfaces, cuts, and/or bare wood should be painted with Siparila touch-up paint. Siparila NORTH product range accessories (e.g. corner pieces, etc.) must be fastened with nails and any visible nail heads should be painted with Siparila ARCTIC touch-up paint (available from your supplier).

## Horizontal cladding panel installation

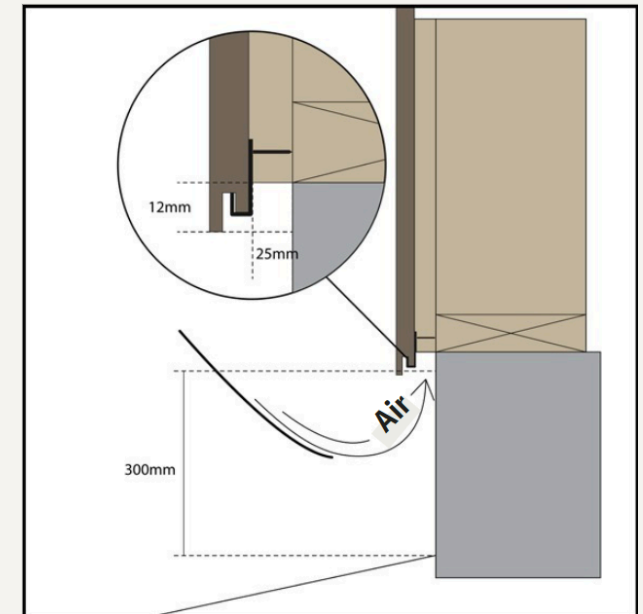
**NOTE: Installed product is considered as accepted! Please inspect the product for any deviation/defect before installation. Absolutely no claims will be accepted on installed products.**

### 1. STORAGE

Cladding must be stored on an even surface and well protected on every side. The wood panels must be kept away from direct sunlight, burning heat and moisture. The cladding must be stored at least 10 cm (4") off the ground to enable free air circulation.

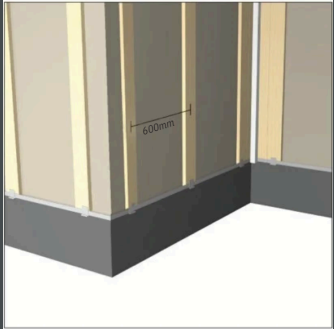
### 2. INSTALLATION OF FURRING STRIPS

Exterior panels are mounted to furring strips. The purpose of the furring strips is to ensure free circulation of air behind the cladding and to prevent the concentration of moisture behind the panels. Use at least 25 mm (1") thick and 100 mm (4") wide furring strips to secure a ventilation gap of at least 20 mm (3/4") between the building structure and the panels.



## INSTALLATION INSTRUCTION

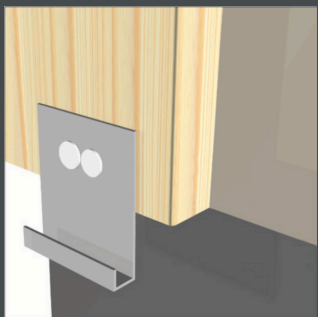
The ventilation gap must allow air to circulate freely. When the panels are installed horizontally, the furring strips must be installed vertically. The c/c spacing between the furring strips may not exceed 600 mm (24"). If the furring strips are fastened more than 600 mm (24") apart, design the structure again.



### 3. STARTING THE INSTALLATION

Start the cladding installation at least 30 cm (12") off the ground surface. The cladding may not touch the ground at any point.

The installation of horizontal cladding is started by fastening the starter hooks. Fasten the starter hooks to the furring strips with screws 600 mm (24") apart. Use a laser to check that the starter hooks are aligned straight. Using starter hooks makes it possible to achieve a completely nail-free façade surface. If you want to protect your house with a rodent mesh, install the mesh before installing the hooks.



**SIPARILA**

SIPARILA SIDING PANELS | WWW.SIPARILA.FI

## ARCTIC

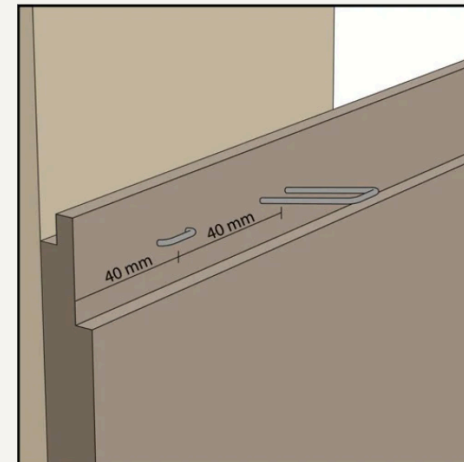
### 4. FASTENING THE CLADDING

#### A. Fastening the cladding with staples

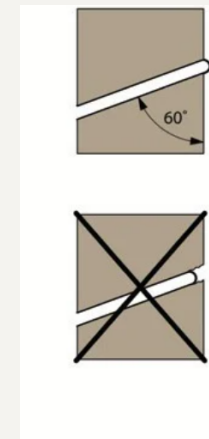
Siparila recommends using staples for fastening. Staples are easier to drive into the tongue of the panel, and the risk of cracking the tongue is smaller than with nails. Use 50 mm x 11 mm x 1.6 mm stainless steel staples for fastening the cladding. Use two staples at each fastening point. You will need 3,5 staples/running meter/yard (c/c 600/24").

Drive the staples into the fastening groove in tongue of the panels. The staples should be 40 mm (1,5") apart. Use staples that are intended for outdoor use. The fastening distance from the end of the panel must be at least 40 mm (1,5") to prevent cracking of the panel.

A stapler, guiding tip and staples suitable for fastening can be obtained from Siparila.



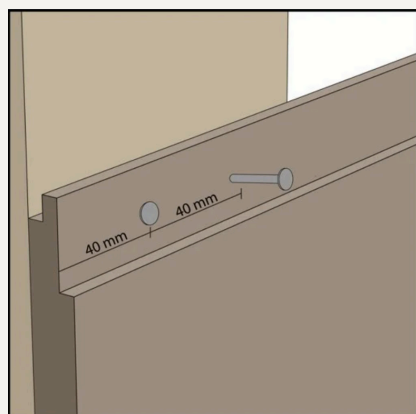
#### Staple



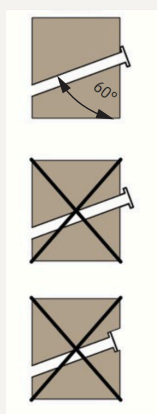
B. Fastening the cladding with nails

Insert the groove of the panel into the starter hook and fasten it from the tongue into the furring strip with a nail. Panels with a hidden fastening are fastened from the tongue to each furring strip with two nails. The nailing distance from the panel end must be at least 40 mm (1,5") to prevent cracking of the panel.

Drive the nails 40 mm (1,5") apart. Make sure that the nails are not driven too deep so as to damage the panel surface. The nails may not protrude from the surface either.



Nail



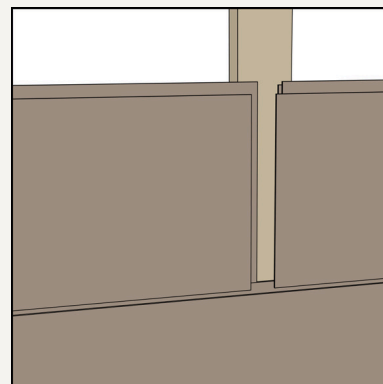
Choose a suitable nail for your product

<p><b>2.1 mm / 2.3 mm x 50 mm Hot-dip zinc-coated nail</b></p>	<p><b>Arctic Topcoat Natural Tones</b></p>
<p><b>2.1 mm / 2.3 mm x 50 mm Stainless steel nail</b></p>	<p><b>Arctic Lucid Arctic Fire-Retardant Thermally Modified Cladding</b></p>

You will need 3,5 nails / running meter (yard)

5. ALIGNING THE END MATCHED CLADDING

The panels with tongues on all four sides allows flexible joint placement. Joints don't need to be aligned on top of the furring strips, as the panels can be joined at their tongue end. Make sure that the tongued end has been pushed in all the way before fastening the panel.



6. PAINTING OF CUT SURFACES/LEAD-THROUGHS

When the ARCTIC cladding needs to be cut during installation, be sure to paint the cut surfaces with plenty of paint IMMEDIATELY AFTER WORKING. Also paint any lead-throughs with plenty of paint immediately after working. Lead-throughs mean the penetrations needed for electrical and HEPAC installations that break the façade surface. If the cut surfaces are left unpainted, this may give rise to cracks on the panel surface when the wood moves when the temperature and moisture levels change.

**ALWAYS FASTEN THE PANELS AT THE CENTER OF THE TONGUE. THE TONGUE OF THE PANEL MAY CRACK IF THE PANELS ARE FASTENED FROM ABOVE AT THE TOP PART OF THE TONGUE. FASTENING FROM THE BOTTOM PART OF THE TONGUE WILL LEAVE THE FASTENING MARKS VISIBLE.**

**MAKE SURE THAT EACH PANEL IS FASTENED TO EACH FURRING STRIP WITH TWO STAPLES OR NAILS.**

**WHENEVER THE FACTORY-PAINTED SURFACE IS BROKEN, BE SURE TO IMMEDIATELY APPLY TOUCH-UP PAINTING ON IT. IF YOU NOTICE ANY DENTS IN THE PANELS DURING INSTALLATION, TOUCH-UP PAINT THEM WITH THE PAINT SUPPLIED WITH THE DELIVERY**

## Vertical cladding panel installation

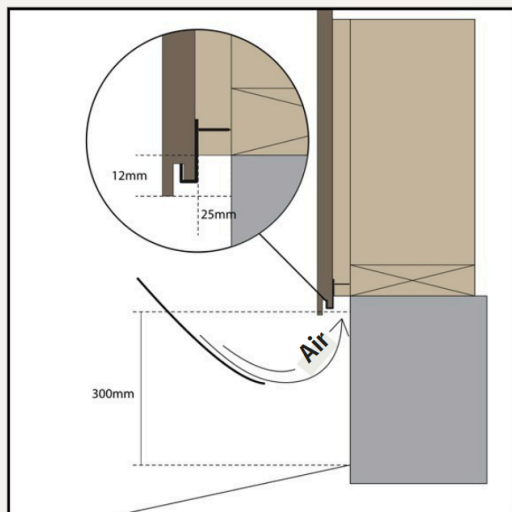
**NOTE: Installed product is considered as accepted! Please inspect the product for any deviation/defect before installation. Absolutely no claims will be accepted on installed products.**

### 1. STORAGE

Cladding must be stored on an even surface and well protected on every side. The wood panels must be kept away from direct sunlight, burning heat and moisture. The cladding must be stored at least 10 cm (4") off the ground to enable free air circulation.

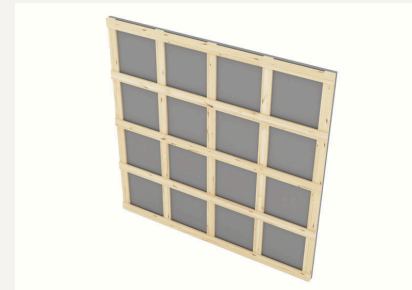
### 2. INSTALLATION OF FURRING STRIPS

Exterior panels are mounted to furring strips. The purpose of the furring strips is to ensure free circulation of air behind the cladding and to prevent the concentration of moisture behind the panels. Use at least 25 mm (1") thick and 100 mm (4") wide furring strips to secure a ventilation gap of at least 20 mm (3/4") between the building structure and the panels. The c/c spacing between the furring strips may not exceed 600 mm (24").

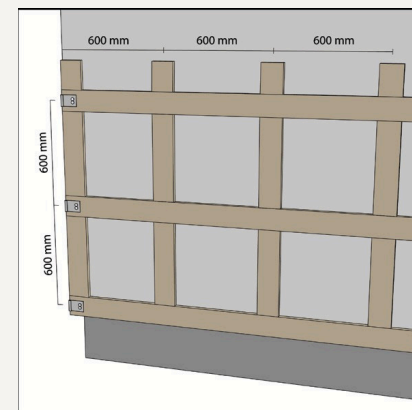


Start the installation of cladding at least 30 cm (12") off the ground surface. The cladding may not touch the ground at any point.

When the cladding is installed vertically, the furring strips are fastened crosswise. First fasten the vertical studding, and then nail the furring strips on top of the studding max. 600 mm (24") apart. The panels are fastened on top of the crosswise studding. If the furring strips are fastened more than 600 mm (24") apart, design the structure again.



Fasten the starter hooks to the furring strips with screws 600 mm (34") apart. In vertical cladding, the starter hooks must also be fastened to the outgoing external corner over its entire height and to the bottom edge of the building. Use a laser to check that the starter hooks are aligned straight. Using starter hooks makes it possible to achieve a completely nail-free façade surface. If you want to protect your house with a rodent mesh, install the mesh before installing the hooks.

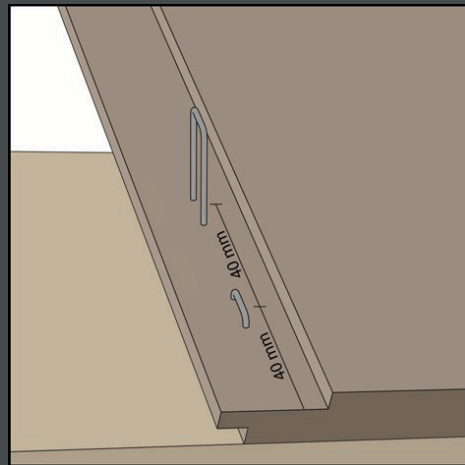


## 4. FASTENING THE CLADDING

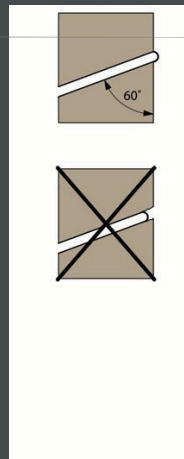
### A. Fastening the cladding with staples

Start the installation of cladding from the bottom corner of the building. Proceed from left to right and from bottom to top. Siparila recommends fastening the cladding with staples. Staples are easier to drive into the tongue of the panel, and the risk of cracking the tongue is smaller than with nails. Use 50 mm x 11 mm x 1.6 mm stainless steel staples for fastening the cladding. Use two staples at each fastening point. You will need 3,5 staples/running meter / yard (c/c 600 mm /24"). Drive the staples into the tongue of the panels. The staples should be 40 mm (1,5") apart. Drive the staples at about 60 degree angle to the cladding panel to ensure that, the tongue is not damaged while fastened. The fastening distance from the end of the panel must be at least 40 mm (1,5") to prevent the cracking of the panel.

A stapler, guiding tip and staples suitable for fastening can be obtained from Siparila.

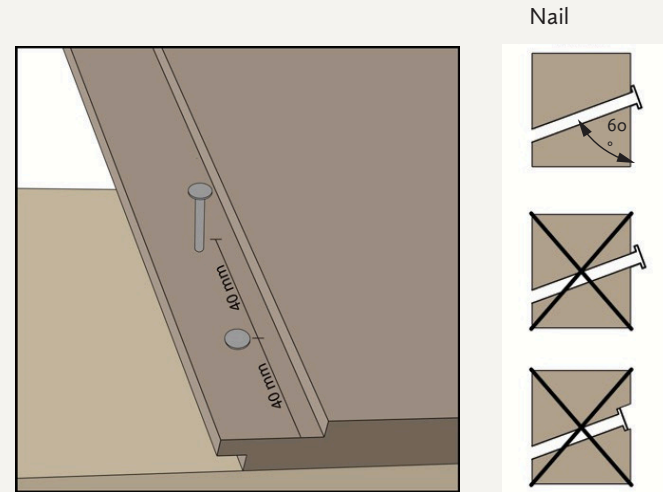


Staple



### B. Fastening the cladding with nails

Fasten the panels to the furring strip with two nails at each fastening point. The nails should be about 40 mm (1,5") apart. Make sure that the nail is at least 40 mm (1,5") from the top and bottom end of the panel to prevent cracking of the panel. Make sure that the nails are not driven too deep so as to damage the panel surface. The nails may not protrude from the surface either.



Drive the nails at about 60 degree angle to ensure that the tongue is not damaged while fastened. Fasten the panels tightly against one another. Make sure that the tongues are pressed all the way to the bottom. Check regularly that the cladding are straight.

#### Choose a suitable nail for your product

<p><b>2.1 mm / 2.3 mm x 50 mm</b>  <b>Hot-dip zinc-coated nail</b></p>	<p><b>Arctic Topcoat</b>  <b>Natural Tones</b></p>
<p><b>2.1 mm / 2.3 mm x 50 mm</b>  <b>Stainless steel nail</b></p>	<p><b>Arctic Lucid,</b>  <b>Arctic Fire-Retardant</b>  <b>Thermally Modified Cladding</b></p>

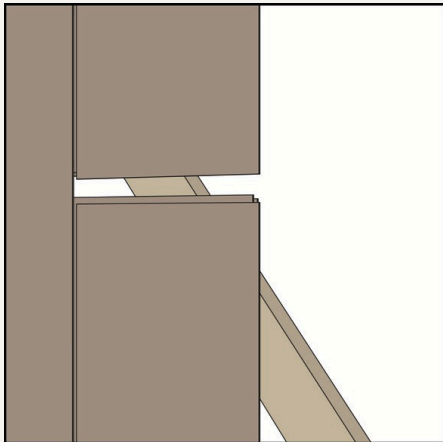
You will need 3,5 nails / running meter (yard)

ALWAYS FASTEN THE PANELS AT THE CENTER OF THE TONGUE. THE TONGUE OF THE PANEL MAY CRACK IF THE PANELS ARE FASTENED FROM ABOVE AT THE TOP PART OF THE TONGUE. FASTENING FROM THE BOTTOM PART OF THE TONGUE WILL LEAVE THE FASTENING MARKS VISIBLE.

MAKE SURE THAT EACH PANEL IS FASTENED TO EACH FURRING STRIP WITH TWO STAPLES OR NAILS.

## 5. ALIGNING THE END MATCHED CLADDING

Panels with tongues on all four sides allows flexible joint placement. Joints don't need to be aligned on top of the furring strips, as the panels can be joined at their tongued ends. In vertical cladding, be sure to check that the tongue is pointing upwards. This prevents the ingress of water into the joint. Make sure that the tongued end has been pushed in all the way before fastening the panel.



## 6. PAINTING OF CUT SURFACES/LEAD-THROUGHS

When the ARCTIC cladding needs to be cut during installation, be sure to paint the cut surfaces with plenty of paint IMMEDIATELY AFTER WORKING. Also paint any lead-throughs with plenty of paint immediately after working. Lead-throughs mean the penetrations needed for electrical and HEPAC installations that break the façade surface. If the cut surfaces are left unpainted, this may give rise to cracks on the panel surface when the wood moves when the temperature and moisture levels change.

WHENEVER THE FACTORY-PAINTED SURFACE IS BROKEN, BE SURE TO IMMEDIATELY APPLY TOUCH-UP PAINTING ON IT.

# SIPARILA

SIPARILA CLADDING PANELS | WWW.SIPARILA.FI