

ENGLISH



# SIPARILA

DURABLE SURFACES, GENUINE WOOD

EXTERIOR CLADDING PRODUCTS

# CONTENTS

PASSION FOR WOOD .....	5
MATERIALS .....	6
FASTENING METHODS .....	7
TREATMENTS .....	8
ARCTIC .....	10
TOPCOAT® .....	12
NATURAL TONES .....	17
LUCID .....	21
NORDIC .....	24
MIDCOAT .....	26
BASECOAT .....	31
PURE .....	33
NORTH .....	36
KATTO ROOFING AND EXTERIOR CLADDING BOARDS .....	39
GARDEN CONSTRUCTION .....	41
CONCEALED FASTENING PANELS .....	44
PROFILES   NORTH FINISHING PRODUCTS .....	45
PROFILES   GARDEN CONSTRUCTION .....	46
SUSTAINABILITY .....	49
CONTACT US .....	51

A photograph of a modern building with dark wood cladding, set against a clear blue sky with light clouds. The building's facade is composed of vertical wooden slats, and the lower part shows white concrete balconies and windows. The overall scene is bright and clean, emphasizing the natural material of wood in a contemporary architectural context.

# PASSION FOR WOOD

Siparila's story is rooted deep in the Finnish tradition of building with wood and in the diversity of nature. At Siparila, as pioneers in the wood industry, we are dedicated to offering our customers the same excellent protection and durability that the trees in the forest offer year after year.

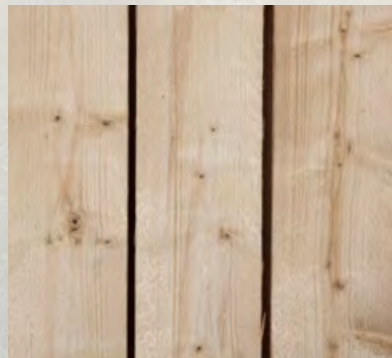
Our exterior cladding products are made of Nordic wood, which is more than just a material. Each piece of wood passing through our manufacturing process is part of sustainable and timelessly beautiful wood construction. We help our customers utilise the best qual-

ities of wood; our vision is to make building with wood easier, faster and more sustainable. All of our products are made in Finland.

Together, we can shape the construction culture of the future in a sustainable and visual way. We want to offer builders new, sustainable solutions that speed up the building process and allow saving time and construction expenses. We work every day towards a more sustainable construction culture allowing us to offer responsible and user-oriented solutions to the builders.

# MATERIALS

The choice of exterior cladding materials is of vital importance, as it affects both the appearance and performance of the façade. Wood is an environmentally friendly, durable and recyclable material serving as the basis of Siparila's products. As pioneers in building with wood, we take care of the well-being of forests and are involved in ensuring that wood will be available in the future as well. Our wood products are CE-marked and do not contain chemicals hazardous to humans or nature.



## SPRUCE

Spruce is known for its tough and dense wood, which makes it naturally durable. We manufacture all our exterior cladding products from solid spruce.



## PINE

Pine is a coniferous tree, and its wood is lightweight, flexible, and easily manageable. We manufacture all our thermally treated terrace boards from solid pine wood.



## GLUED SPRUCE AND PINE

Glued board-based products provide for a more dimensionally stable exterior cladding. The physical size of the product can also be increased with the glued board structure.

# FASTENING METHODS

## CONCEALED FASTENING

Panels with concealed fastening make for a nail-free, stylish and weather-resistant façade. Owing to concealed fastening, any marks resulting from fastening remain hidden and the panels are free of nail head holes through which water and impurities could be absorbed into the wood, dealing damage. Fastening is done conveniently with staples or nails, depending on the profile.



## TOP-MOUNTING

Top-mounting is the traditional fastening method that leaves the nail heads visible. Because of this, the fastening locations must be treated so that the nail heads are not left unprotected and moisture or other impurities cannot end up inside the panel.



## END-JOINTING

Panel end-jointing eliminates the need to cut the panels to match the battens. End-jointed panels are installed to extend directly from the end of the previous panel, thereby keeping the joint firmly in place. End-jointing reduces material waste and helps save time and money.



# TREATMENTS

## ARCTIC – TOPCOAT® READY PAINTED

As the name suggests, ready painted panels are fully completed and ready for installation. Owing to their completely finished surface, the panels are resistant to moisture and can be installed at any time of the year. Only the cut panel surfaces need to be treated at the construction site, which helps to save both time and money.

## ARCTIC – NATURAL TONES NATURAL TONES

The Natural Tones translucent treatment is visually similar to translucent treatment, but more durable in terms of characteristics. The UV protection granted by the Natural Tones treatment is better as compared to traditional translucent treatment, which means that the panels also last longer.

## ARCTIC – LUCID TRANSLUCENT

The Lucid treatment brings variation to façades painted with opaque tones – the translucent general appearance renders the natural wood grain patterns visible. Translucent panels are delivered completely ready and require no painting after installation.

## FIRE-RETARDANT

The fire-retardant treatment gives the wood effective protection against fire complying with the requirements of the highest fire safety class in case of wood, B-s1, d0. Siparila's fire-retardant products can be delivered completely finished.

## NORDIC – MIDCOAT MID-COATED

Mid-coating allows installation of a presentable façade in the construction stage, leaving more time for choosing the final shade. Mid-coating also protects the panels during construction. A mid-coated panel needs to be treated once at the work site.

## NORDIC – BASECOAT BASE-COATED

A one-off base coating creates a good basis for construction, but requires treatment at the work site. That is, a base-coated panel must be painted 2-3 more times after installation, in order to provide the wood with a protective paint coating against moisture and dirt.

## NORDIC – PURE UNFINISHED WOOD

Unfinished wood products are completely untreated. Therefore, unfinished wood products require treatment at the work site, but are available even on a short schedule.

## THERMALLY TREATED

In thermal modification, the structure of the wood is modified with the help of heat and steam to change its properties. Thermal modification improves durability: the wood retains its dimensions regardless of variations in temperature or humidity, excellently withstands different weather conditions and boasts improved resistance to rot and UV light. Thermally modified products can be used in either painted or unfinished version.



*Over the years, the colour of thermally treated wood changes from a warm wood tone to charming grey if left untreated.*



The cut edges of panels should always be treated to achieve a high-quality and durable exterior cladding.

# ARCTIC

The ARCTIC series pays tribute to Nordic forests and their gifts to us. ARCTIC is a product series that wonderfully emphasizes the best qualities of wood – durability, versatility and uniqueness.

Nothing compares to the tenacity of trees growing in Nordic forests: they cope with freezing cold winters, sleeping under the weight of snow. When spring comes, the trees wake up to enjoy the warmth of the sun and bright nights. Swept by autumn rains and darkness, the forest once again prepares for the winter rest period. This cycle of seasons has refined the trees towards durability and uniqueness.

Siparila's story started decades ago in the small village of Siparila, where a passion for wood and building with wood had been passed down from generation to generation. The villagers of Siparila, located on the shore of Lake Valkjärvi, were skilled wood builders. This ability to bring out the best in wood has been passed down to the present day and the same skills are currently being utilised in the manufacture of Siparila's products.

The ARCTIC product series is an excellent choice if you want to enjoy the beauty of wood in the form of ready-to-use products. The exterior cladding panels of the product series are pre-processed, which means that simply installing them in place is sufficient. In the products, premium-level quality and comfort are combined – like Nordic forests, they withstand cold, rain and scorching sun year after year.

The ARCTIC product series includes TOPCOAT®, NATURAL TONES and LUCID exterior cladding products.



The products in the ARCTIC series are completely ready for use – they can be installed year-round, regardless of the weather.



# TOPCOAT®

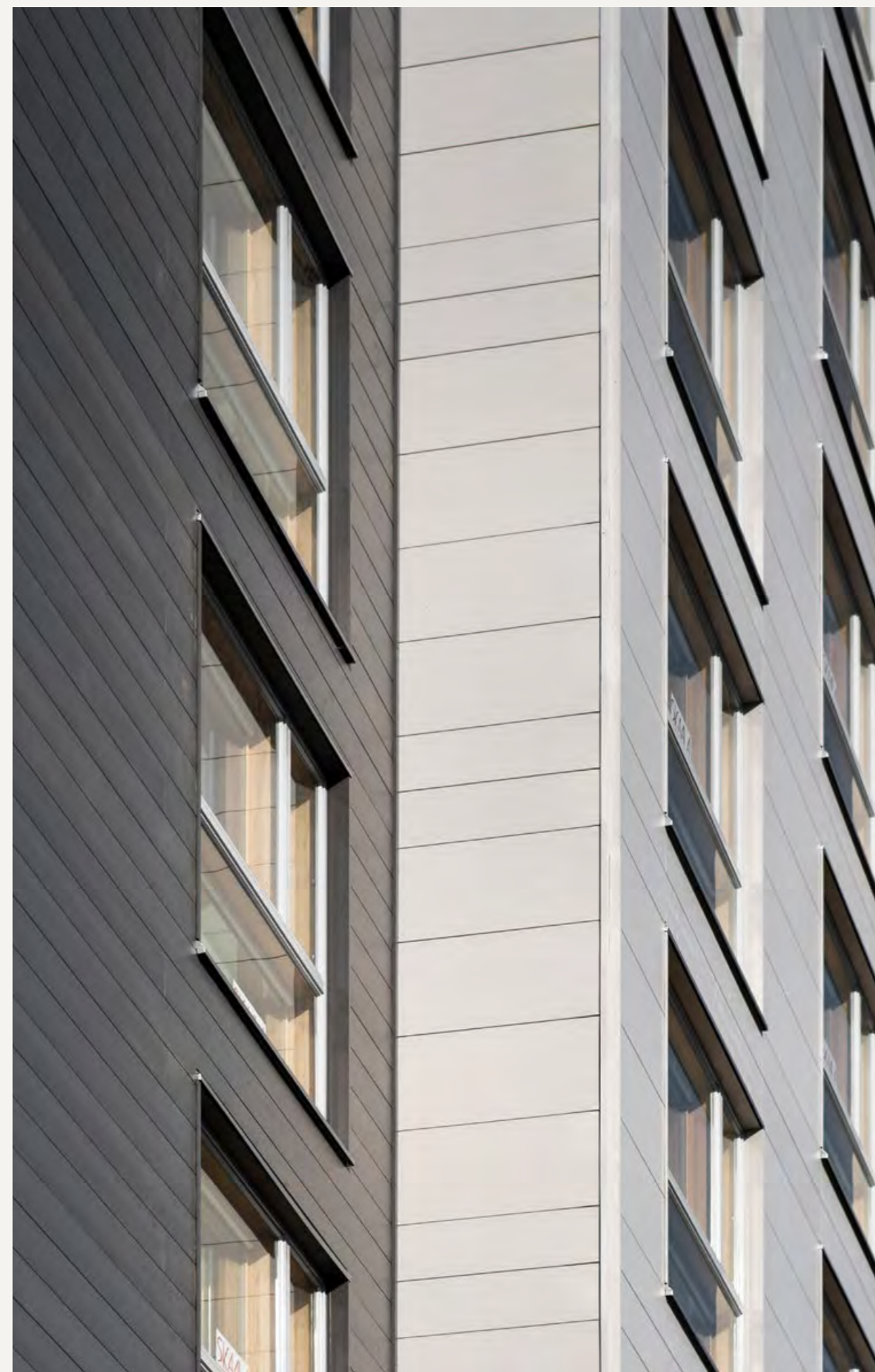
## COMPLETELY FINISHED EXTERIOR CLADDING

TOPCOAT® is a reliable choice for exterior cladding – the completely finished products always make up an elegant and high-quality façade. The panel surface is protected against moisture and UV radiation, so it endures well year after year. Fully painted and end-jointed, TOPCOAT® is easy and quick to install at any time of the year, as the panels require no on-site treatment whatsoever, with the exception of cut surfaces.

TOPCOAT® exterior panels have concealed fastening which enables completely nail free exterior surface. Concealed fastening makes installations fast and cost effective. Concealed fastening is done with staples or nails, depending on the profile. We deliver all fastening accessories to support installation: starter hooks, a staple gun, and a special guiding tip for the staple gun allowing easy alignment of the staples.

TOPCOAT® panels can be manufactured in all exterior paint color tones. One can choose 10- or 15-year warranty for the surfaces of fully painted panels.









# NATURAL TONES

## NATURALLY TRANSLUCENT AND DURABLE SURFACE

The NATURAL TONES exterior cladding is a natural, durable and beautiful choice for building a façade. The translucent surface leaves the grain patterns beautifully visible, bringing out the best qualities of wood on the surface of the exterior cladding. NATURAL TONES exterior cladding panels are fully pre-processed at the production plant, so no post-installation treatment is required, except for the cut surfaces. The panels have particularly good UV protection, which shields the wood against the harmful effects of UV radiation.

NATURAL TONES panels are available in seven different shades. The panels are guaranteed to be maintenance treatment-free for 10 years. To improve weather resistance, the panels are always available in the concealed fastening version. Owing to concealed fastening, moisture and other impurities cannot be absorbed into the panel through the nail holes.

ARCTIC



NATURAL  
TONES





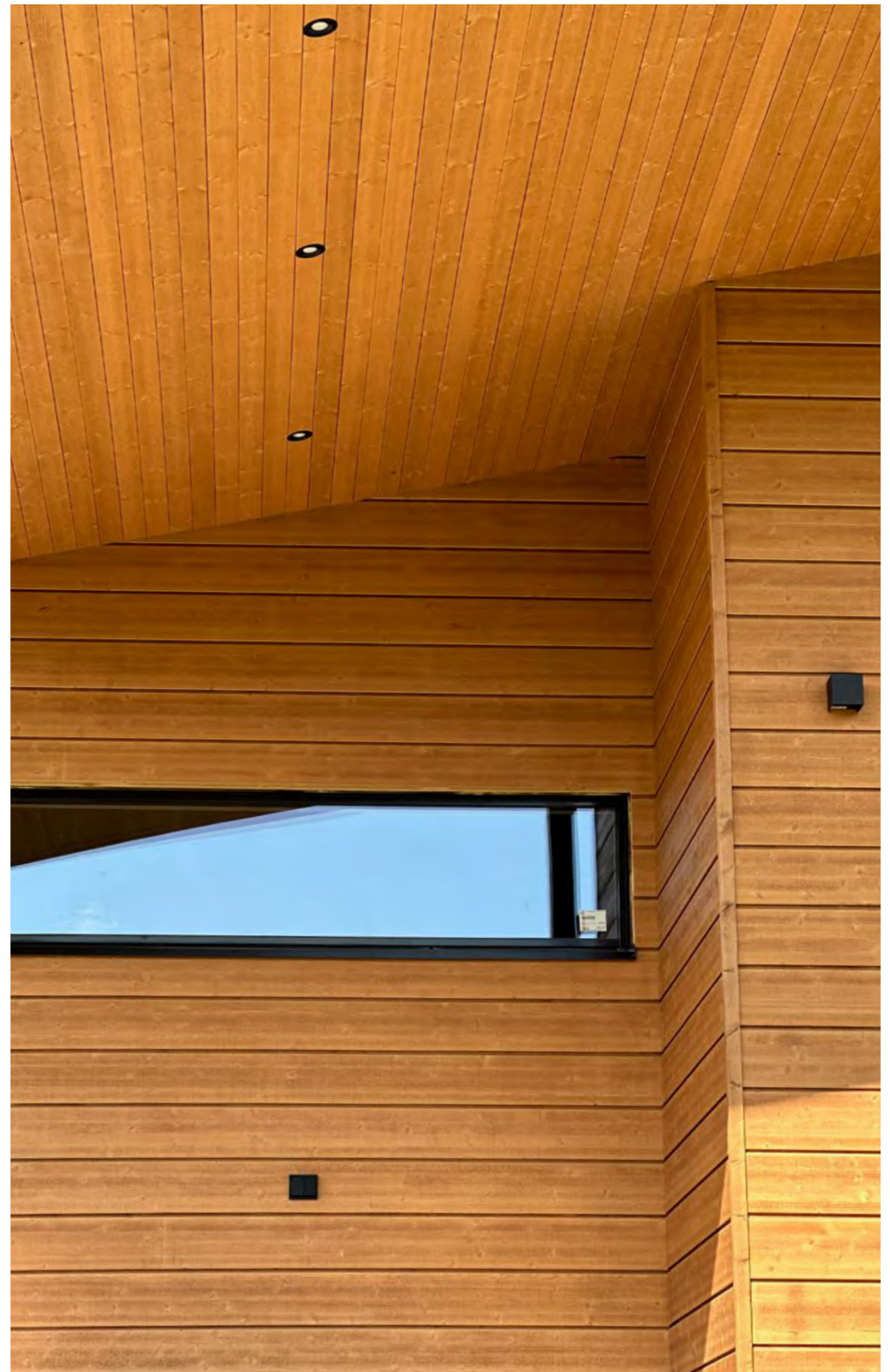
# LUCID

## NATURALLY TRANSLUCENT EXTERIOR CLADDING

LUCID exterior cladding panels bring out the appearance characteristic to wood in the form of grain patterns. Owing to the translucent surface of LUCID panels, the façade looks beautifully light. The panels are delivered fully pre-treated, which means that no on-site treatment is required, except for the cut surfaces.

The maintenance interval for LUCID panels is 2-4 years, after which period the exterior cladding needs to be re-treated in order to maintain its appearance and durability.





# NORDIC

The NORDIC product series is a homage to Finnish wood-working skills that go back for centuries. It is a tribute to the generations who have learned the skills and accumulated the knowledge allowing us to enjoy high-quality wood products today.

Forests and trees have always been an integral part of people's lives. Wood equals home, warmth and protection. In the rugged Nordic landscapes, forests and woodworking skills have kept people alive for thousands of years. For millennia, forests have allowed the people living in the North to survive by providing them shelter, food and sustenance. Since those times, a deep respect for wood has been passed down from generation to generation.

As a material, wood is unique – it is soft and lively, yet strong and durable at the same time. Owing to these features, to this day, wood remains a versatile material for both outdoor and indoor use. In addition to practicality, wood also represents beauty: its unique surface allows breathtakingly gorgeous creations that can only be implemented with wood.

The NORDIC product series is the right choice if you fancy wood in its most authentic form and would prefer to carry out the final surface treatment yourself. The exterior cladding panels of the product series are available with different treatments or untreated, in which case the panels must also be painted in addition to installation.

The NORDIC product series includes MIDCOAT, BASECOAT and PURE exterior cladding products.

The NORDIC series products are treated to their ultimate splendour after installation.



The products in the NORDIC series are treated to their final brilliance after installation.





# MIDCOAT

## EXTERIOR CLADDING WITH A SINGLE PAINT COAT

MIDCOAT exterior cladding panels come with a single top paint coat. The industrially applied top paint coat speeds up painting work at the construction site, reduces paint consumption and protects the wood against sunlight and water. Owing to the paint coat, the MIDCOAT exterior cladding looks stylish already in the construction stage, but still leaves time for choosing the final shade.

MIDCOAT exterior cladding panels must be treated once at the construction site in order to achieve the final surface of the product. The painting must take place within 18 months of installation, as the nail heads will remain visible on the façade. The maintenance painting interval of a painted façade is 10–20 years.





# BASECOAT

## A GOOD BASE FOR PAINTING

BASECOAT exterior cladding panels have been primed once to create a primer film providing temporary protection. Exterior cladding with a primer base coat is a traditional solution that requires the painting work to be done at the construction site.

In order for the façade surface to achieve the durability desired, the BASECOAT exterior cladding surface must be treated at least twice after installation. No warranty is granted to BASECOAT exterior cladding panels, as the required maintenance painting interval depends on the outcome of the two or three surface treatment rounds carried out at the work site.





NORDIC



PURE

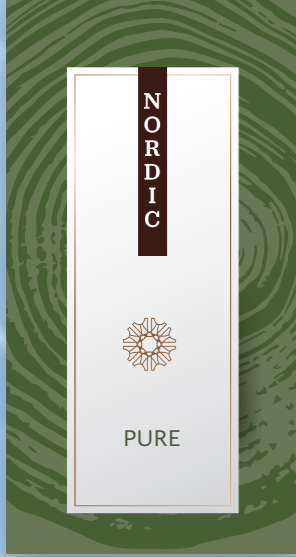
# PURE

## A COMPLETELY UNTREATED OPTION

The unfinished wood PURE exterior cladding panels have not undergone any industrial treatment. PURE exterior cladding panels are particularly well suited for locations with modest need for materials – the panels can be delivered quickly and the on-site painting work is not unreasonably time-consuming.

As the PURE exterior cladding panels have not been treated to any shade, this also provides extra time for choosing the colour of the exterior cladding. However, the untreated surfaces of the panels are sensitive to moisture and other contaminants, which needs to be considered at the work site.

The thermal modification for the PURE panel improves the properties of the untreated panel. When thermally modified, PURE is particularly resistant to UV radiation and moisture without industrial treatment. The thermal modification changes the color of the cladding to a beautiful brown, and over time, it grays to a fabulous silver.

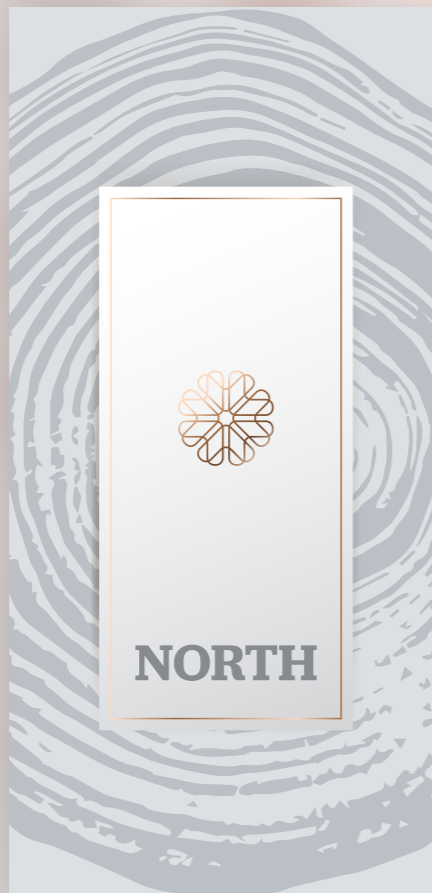


# NORTH

## PERFECT FINISHING

Wood is an impressive and complex material. Wood can be used for creations finished down to the last detail, which make you stop and sigh in admiration. NORTH products finalise the house and the yard into a perfect whole.

NORTH series products are made of high-quality genuine wood. The products of the series are available untreated, primed, top-coated, or completely finished.



## WINDOW CASING BOARD

### A neat outcome

The WINDOW CASING BOARD functions as a trim between the outer wall of the building and the window opening and matches the windows uniformly with the exterior panelling. Pre-painted window casing boards are quick to install. The specially shaped aluminium strip allows the boards to be easily fitted in place and the outcome is neat and tidy. With Siparila's window casing boards, even problematic crooked windows can be tightly finished.



## EXTERNAL CORNER MOULDING

### Complement the modern appearance

EXTERNAL CORNER MOULDINGS can be used to elegantly finish the corners of the building. The moulding is an elegant and modern alternative to the more traditional wide corner boards.

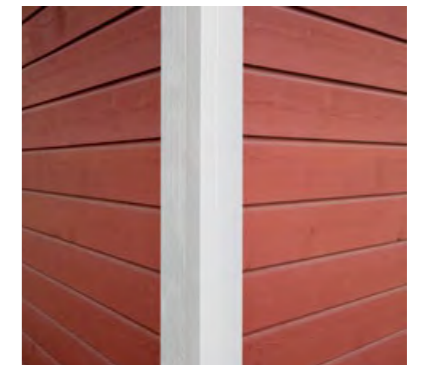
The corner moulding covers the panel ends and keeps them safe from moisture and dirt. The panel ends should be protected with paint before external corner moulding installation for the outcome to be as durable as possible.

## READY CORNER

### Enduring style

READY CORNERS can be used for wide and traditional corner boarding without loose corner boards, which may be subject to warping over time.

READY CORNER mouldings are corner boards pre-glued to the required form for easy and quick installation. READY CORNERS guarantee a durable and neat result.





# KATTO BOARDS

## AND EXTERIOR CLADDING BOARDS

### WHEN DETAILS MATTER

The high-quality boards are suitable for different applications on the exterior surfaces of buildings. The products are available untreated, base-coated, top-coated, completely ready for use and with fire-retardant treatment.

#### KATTO fascia boards

Designed especially for roof renovation works, but can also be used for open eaves. Surface-treated fascia boards streamline installation and extend the maintenance interval for visible boards.



#### KATTO eave boards

Designed especially for roof renovation works. Surface-treated eave boards streamline installation and extend the maintenance interval for visible boards.



#### KATTO ventilation and cladding boards

The ventilation and cladding boards are painted on all four sides with a wood preservative that protects the wood from moulding and blue staining.



#### KATTO rough planed T&G boards

Designed for trouble-free roof construction. Available in versions treated with wood preservative, as well as pre-primed and top-coated. Available in the shades of the exterior colour charts.



End-jointed (PP) boards are suitable for concealed surfaces. Fine-sawn (HS) boards are suitable for visible surfaces. Available in panel-profiled (RPL/STV) or flat-surfaced (RPL/HS) versions. RPL PL/VL boards are short-edged and rough tongue-and-grooved. These boards are intended for applications where the underside remains concealed.

#### Exterior cladding boards

The boards with fine-sawn surface are suitable for use as exterior cladding boards, window jambs, eave baseboards, and corner boards. Different profiles are available.





# GARDEN CONSTRUCTION

Wood is an excellent material for different garden structures. It can be adapted to many different shapes, styles and colour schemes and withstands varying weather conditions from freezing cold to scorching hot.

High-quality materials guarantee an enjoyable building process. Siparila's terrace boards, top-coated laths and fence boards reduce the volume of building work and ensure a gorgeous outcome.

## Terrace boards



*Thermodeck Elegant, concealed fastening*



*Thermodeck Classic, concealed fastening*

## Laths

For fences and terrace screens.

Rhomboid 26 x 68 mm  
Trapezium 42 x 42/28 mm



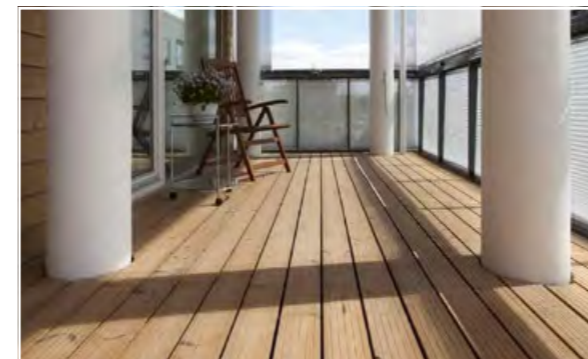
## THERMODECK TERRACE BOARDS – GREAT STYLE AND DURABILITY

In Siparila terrace boards, excellent durability is combined with a stylish appearance. The THERMODECK heat treatment makes the boards truly durable and long-lasting as compared to untreated wood. The moisture content of the board is low, which makes it more resistant to UV radiation and less prone to surface cracking than normal wood. No chemicals are used in the heat treatment, only heat and steam.

THERMODECK boards do not need to be treated in any way. Without treatment, the surface of the wood will turn elegantly grey. However, if the board is to retain its warm brown colour, it should be surface-treated.

### THERMODECK ELEGANT

Grooved terrace board, top-mounted or concealed fastening.



### THERMODECK CLASSIC

Smooth-surfaced terrace board, top-mounted or concealed fastening.



## LATHS

### For easy construction

With surface-painted laths, you can conveniently build fences, railings, screens, canopies and decorative structures for your yard or personalised details for building façades. The laths are surface-painted and require only a light finishing coat and after-treatment of cut surfaces and fixing marks at the work site.



### FENCE BOARDS

#### Quick completion

With the pre-painted fence boards, building a fence is easy and quick, as only a light finishing coat and after-treatment of cut surfaces and fixing marks at the work site is required after installation. The fence boards are available in several different sizes. The standard fence board colour is white.

### RAILING PLANK

#### Final touch for perfect fence

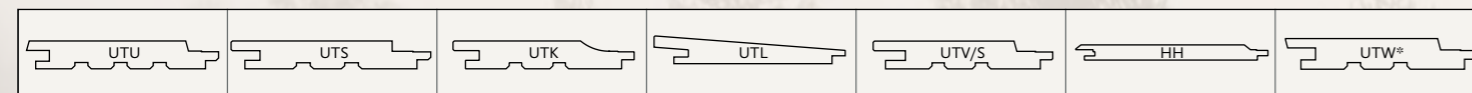
Make an elegant finish of the fence with pre-painted railing planks. After installation, only light finishing of the fixing marks and cut surfaces is required to prevent water and contaminants from damaging the wood. The standard colour of the planks is white, but other shades from exterior colour charts are also available on order.



# CONCEALED FASTENING PANELS

## SPRUCE

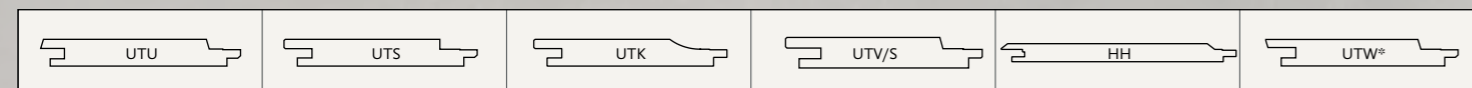
Thickness / width, mm	Consumption, m <sup>2</sup> /m <sup>2</sup> , STAPLE	Consumption, m <sup>2</sup> /m <sup>2</sup> , NAIL	Length, mm	Usable surface	Treatments	Wood species	End joint
22 x 220	5,00	-	3900-4500	fine-sawn	ARCTIC or NORDIC series treatments, fire-retardant	glued spruce	yes**
23 x 120	9,71	10,52	3900-5400	fine-sawn	ARCTIC or NORDIC series treatments, fire-retardant	spruce	yes**
23 x 145	7,81	8,33	3900-5400	fine-sawn	ARCTIC or NORDIC series treatments, fire-retardant	spruce	yes**
28 x 120	9,71	10,52	3900-5400	fine-sawn	ARCTIC or NORDIC series treatments, fire-retardant	spruce	yes**
28 x 145	7,81	8,33	3900-5400	fine-sawn	ARCTIC or NORDIC series treatments, fire-retardant	spruce	yes**
28 x 170	6,53	6,89	3900-5400	fine-sawn	ARCTIC or NORDIC series treatments, fire-retardant	spruce	yes**
28 x 220	4,93	5,12	3900-4500	fine-sawn	ARCTIC or NORDIC series treatments, fire-retardant	glued spruce	yes**



\* Check the consumption with the factory.  
\*\* UTL profile without end joint.

## THERMALLY TREATED SPRUCE

Thickness / width, mm	Consumption, m <sup>2</sup> /m <sup>2</sup> , STAPLE	Length, mm	Usable surface	Treatments	Wood species	End joint
20 x 92	13,88	3900-5400	Brushed / smooth	ARCTIC or NORDIC series treatments	Thermally treated spruce	yes
20 x 115	10,52	3900-5400	Brushed / smooth	ARCTIC or NORDIC series treatments	Thermally treated spruce	yes
20 x 140	8,33	3900-5400	Brushed / smooth	ARCTIC or NORDIC series treatments	Thermally treated spruce	yes
20 x 185	6,06	3900-5400	Brushed / smooth	ARCTIC or NORDIC series treatments	Thermally treated spruce	yes
26 x 92	13,88	3900-5400	Brushed / smooth	ARCTIC or NORDIC series treatments	Thermally treated spruce	yes
26 x 115	10,52	3900-5400	Brushed / smooth	ARCTIC or NORDIC series treatments	Thermally treated spruce	yes
26 x 140	8,33	3900-5400	Brushed / smooth	ARCTIC or NORDIC series treatments	Thermally treated spruce	yes
26 x 185	6,06	3900-5400	Brushed / smooth	ARCTIC or NORDIC series treatments	Thermally treated spruce	yes



\* Check the consumption with the factory.

# PROFILES | NORTH FINISHING PRODUCTS

## EXTERIOR CLADDING BOARDS

Profile	Thickness, mm	Width, mm	Length, mm	Usable surface	Treatments	Material
	20 / 23 / 28	45 / 70 / 95 / 120 / 145 / 170	3900-5400	fine-sawn	ARCTIC or NORDIC series treatments	spruce

## KATTO FASCIA BOARDS

Profile	Thickness, mm	Width, mm	Length, mm	Usable surface	Treatments	Material
	20 / 23	45 / 95 / 120 / 145 / 170 / 195	3900-5400	fine-sawn	ARCTIC or NORDIC series treatments	spruce

## KATTO EAVE BOARDS

Profile	Thickness, mm	Width, mm	Length, mm	Usable surface	Treatments	Material
	20	95 / 120 / 145	3900-5400	fine-sawn	ARCTIC or NORDIC series treatments	spruce

## KATTO ROUGH PLANED T&G BOARDS

Profile	Thickness, mm	Width, mm	Length, mm	Usable surface	Treatments	Material
	23	95	3900-5400	fine-sawn	NORDIC series treatments	spruce
	23	95	3900-5400	planed	NORDIC series treatments	spruce

## KATTO VENTILATION AND CLADDING LATHS

Profile	Thickness, mm	Width, mm	Length, mm	Usable surface	Treatments	Material
	20 / 24 / 31	45 / 98	3900-5400	fine-sawn or planed	NORDIC series treatments	spruce

## WINDOW CASING BOARD

Profile	Thickness, mm	Width, mm	Length, mm	Usable surface	Treatments	Material
	23	176	3000	fine-sawn	NORDIC series treatments	spruce
	23	25	6000	smooth	standard white NCS S-0502-Y (other shades are also available)	aluminium

## EXTERNAL CORNER MOULDING





Profile	Thickness, mm	Width, mm	Length, mm	Usable surface	Treatments	Material
	48	48	3900-5400	fine-sawn	NORDIC series treatments	spruce

## READY CORNER


Profile	Thickness, mm	Width, mm	Length, mm	Usable surface	Treatments	Material
	93	93	3900-4200	fine-sawn	ARCTIC or NORDIC series treatments	glued spruce

# PROFILES | GARDEN CONSTRUCTION


## LATHS

Profile	Thickness, mm	Width, mm	Length, mm	Usable surface	Standard shades	Material
	28	45/30	4200	fine-sawn	white (NCS S-0502-Y) grey (RR23) translucent brown (1805)	spruce
	28	68	4200	fine-sawn	white (NCS S-0502-Y) grey (RR23) translucent brown (1805)	spruce
	40	42	4200	fine-sawn	white (NCS S-0502-Y) grey (RR23) translucent brown (1805)	spruce
	42	42/32	4200	fine-sawn	white (NCS S-0502-Y) grey (RR23) translucent brown (1805)	spruce


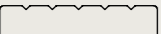
## FENCE BOARD

Profile	Thickness, mm	Width, mm	Length, mm	Usable surface	Treatments	Material
	20*	95 / 120 / 145	3900-5400	fine-sawn	NORDIC series treatments	spruce

## RAILING PLANK

Profile	Thickness, mm	Width, mm	Length, mm	Usable surface	Treatments	Material
	45	145	3900-5400	planed	NORDIC series treatments	spruce

## TERRACE BOARD

Profile	Thickness, mm	Width, mm	Length, mm	Usable surface	Treatments	Material
	26 mm	92 / 115 / 140	3900-5100	planed	unfinished wood	Thermally treated spruce
	26 mm	92 / 117 / 140	3900-5100	planed	unfinished wood	Thermally treated spruce





# SUSTAINABILITY

## Sustainable and healthy living while respecting the vitality of forests

Wood has always been the building material that Finns trust, and we hope to keep it that way. As industry pioneers, we are involved in strengthening a building culture that respects the vitality and health of forests and promotes sustainable and healthy living.

This requires us to continuously and actively develop operating models that promote the well-being of the environment and people. Sustainable development plays an essential role in our business, and product quality, sustainability and safety are the cornerstones of our operations.

As a building material, wood is a responsible choice, as it is environmentally friendly, renewable, and recyclable. Wood construction is one of the best ways to reduce CO<sub>2</sub> emissions from construction because the CO<sub>2</sub> emissions from wood construction are minimal compared to, for example, concrete structures.

## EPD for reliable and transparent measurement of environmental impact

Environmental Product Declarations (EPD) constitute a reliable way to present the environmental effects of products. Siparila's exterior cladding panels and thermally treated panels come with EPDs.

## Well-being of forests as the basis of operations

Forests are the foundation of the vitality and diversity of Finnish nature. The PEFC certification system ensures the well-being of forests internationally and guarantees that the wood has been harvested sustainably, respecting forest biodiversity. We want to play our part in ensuring that the forest's natural habitats and the opportunities for species to live remain strong now and in the future.

## Quality and safety first

In construction, it is important for the products used to be healthy and safe. All Siparila wood products are CE-marked and do not contain chemicals hazardous to humans or nature.

We are constantly developing new surface treatment methods to ensure our wood products look attractive and last long even in challenging weather conditions. Our investment in priming and coating methods has earned Siparila FI certification.



# CONTACT US

[myynti@siparila.fi](mailto:myynti@siparila.fi)

Varaslahdentie 1, FI-40800 Vaajakoski  
Tel. +358 10 4242 000  
[www.siparila.com](http://www.siparila.com)

Follow us on social media



[#siparila @siparila](https://www.instagram.com/siparila)





SIPARILA